

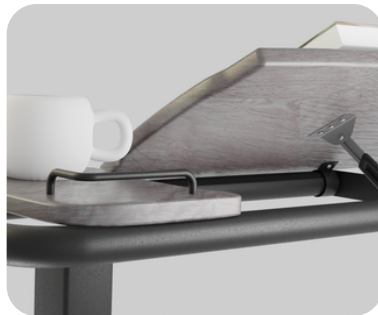
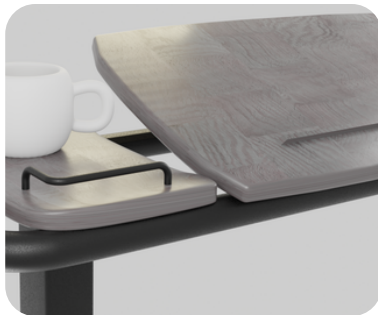
OVER BED TABLE

The Icare Over Bed Table provides a solid foundation for work, recreation or meals, conveniently sits over any bed and mattress. Can also be used over a chair. Easy care wipe down split table top, providing large tilting workspace and separate 'side table' all in one. The tilting table top is reversible.

Height Adjustment Range	730 to 1090mm
Tilt Top Surface Area	470 x 310mm
Tilt Top Stepped Range	0 - 70°
Fixed Side Table Measurements	310 x 150mm
Table Top Load Weight Limit	30kg

Standard Height (larger wheels)	90mm
Low-Profile Height	45mm

C-Shape Base Height	90mm
Base Width	800mm



Universal Compatibility

Table Top Colour Options:



Charcoal



White Ash

PRODUCT CODES - CHARCOAL TABLE TOP

Description Code	Icare Over Bed Table - Standard ACOBTH
Description Code	Icare Over Bed Table - Low Profile ACOBTL
Description Code	Icare Over Bed Table - C Shape ACOBTC

PRODUCT CODES - WHITE ASH TABLE TOP

Description Code	Icare Over Bed Table - Standard ACOBTHW
Description Code	Icare Over Bed Table - Low Profile ACOBTLW
Description Code	Icare Over Bed Table - C Shape ACOBTCW

